



Bathing establishment Fact Sheet

Name of bathing establishment	Bagno Luciano
Address	Byle Amerigo Vespucci 26
City	Marina di Carrara (MS)
Contacts	0585 630580 - info@bagnoluciano.com
Website	www.bagnoluciano.com

TESTED BY: [Handy Superabile - Social Promotion Association](#) in summer 2024

Please note The following information refers to the date of verification shown at the bottom of each sheet. **The Association** is not responsible for any significant changes made by the property after the visit.

Summary

Bathing establishment Fact Sheet	1
Arrival at the property.....	2
Private/public parking.....	2
Pathway from the parking lot to the main entrance	2
Reception reception	3
Bar/restaurant	4
Internal Pathways and common services.....	5
Internal Pathways	5
Toilet and shower for guests with reduced mobility	6
Changing room	7
Beach.....	8
Children's play area	9
Swimming pool	10
Medical practices/healthcare facilities.....	10



Arrival at the property

Private/public parking

Presence of private parking	YES
Type of private parking fund	gravel
Presence of parking space reserved for people with disabilities	YES
Public parking nearby	YES
Type of public parking floor	asphalt



Pathway from the parking lot to the main entrance

Pathway from the car park to the entrance	flat
There are indicators and tactile maps	NO
Useful width of door/entrance gate	Above 90 cm



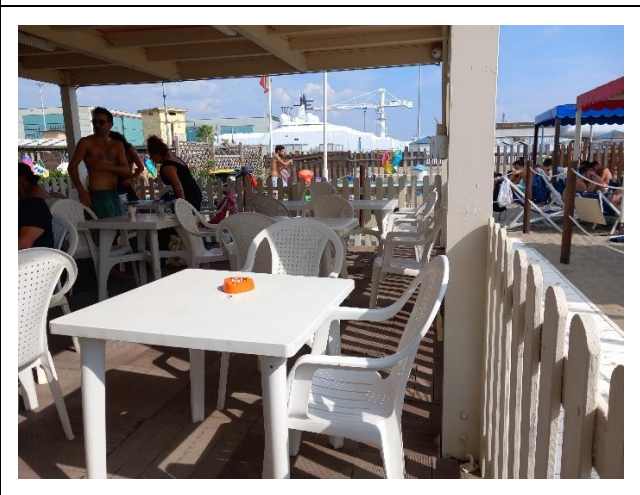
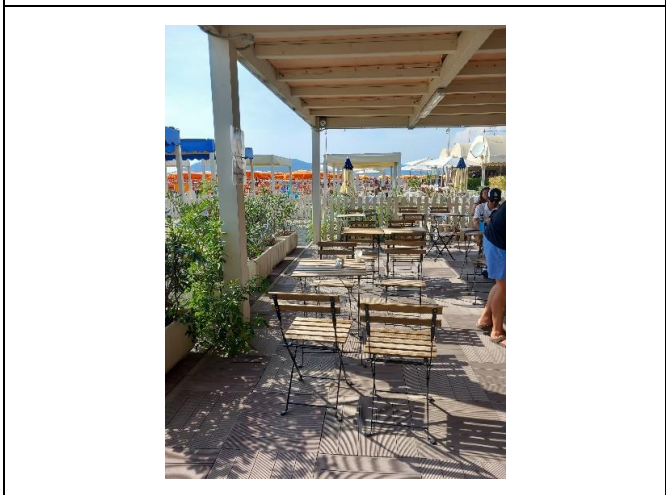
Reception reception

Umbrella booking system	<input type="checkbox"/> By the web <input type="checkbox"/> By phone <input checked="" type="checkbox"/> On-site
Presence of multilingual staff	YES
Presence of plant map with legend of services available	NO
Presence of visuo-tactile map	NO
Bulletin board/information panels with an average height of 130 cm in a well-lit area and a font size of at least 14 dpi with a contrast ratio greater than 4.5:1	YES
The staff followed a training course on welcoming people with different disabilities	NO



Bar/restaurant

Type of venue	Bar/restaurant
Access to the premises	Flat; veranda with ramp length 40 cm, width 99 cm slope 20.7%
Useful width of door/entrance gate	Above 90 cm
Bar bench	Above 100 cm
Types of tables	4- legged and center support
Space under floor tables	Above 65 cm
Multilingual menu	NO
Large print menus	YES
Braille menu	NO
Table service for people with disabilities	YES
Availability of foods for celiacs	<input checked="" type="checkbox"/> bread <input checked="" type="checkbox"/> pasta <input checked="" type="checkbox"/> biscuits <input checked="" type="checkbox"/> ice cream <input checked="" type="checkbox"/> Pre-packaged foods



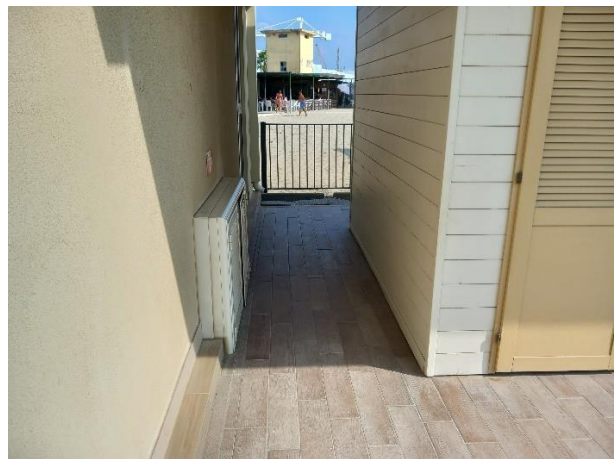


Internal Pathways and common services

Internal Pathways

Indicate whether the pathways connecting the entrance to the beach are flat or with ramps in addition to those already described

Obstacle-free paths



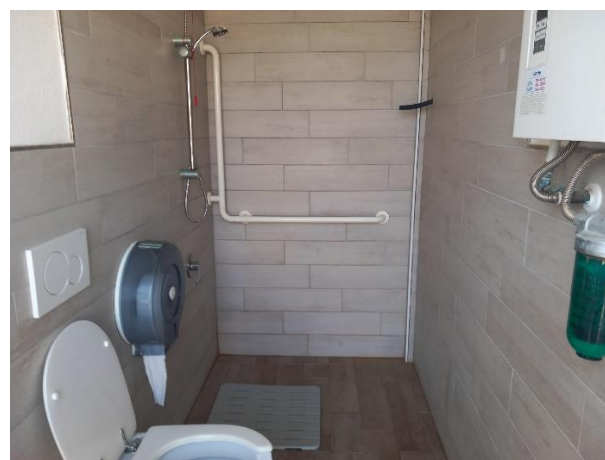


Toilet and shower for guests with reduced mobility

Number of accessible toilets for guests with reduced mobility	1
Access to the premises	flat
Usable width of the entrance door	Above 90 cm
Toilet height	45 cm
Open front toilet seat	YES
Support handles	Missing
Flexible shower on the side of the toilet	YES
Free space on the sides of the toilet	left Above 90 cm right Above 90 cm frontal 64 cm
Electric doorbell/telephone	YES
Washbasin with space underneath for wheelchair	66 cm
Height from the ground lower edge mirror	137 cm
Baby changing table	NO
	
Accessible shower available for guests with reduced mobility	YES in common with the toilet room
Type of shower	open type



Floor-level shower	YES
Shower chair	missing
Support handle	YES
Presence of shower head or sliding rails	Ups and downs with lowest point height 120 cm
Electric doorbell/telephone	YES



Changing room

Changing room accessible to guests with reduced mobility available	YES, shared with the shower/toilet
Access to the premises	flat
Useful width of door/entrance gate	Above 90 cm
Locker room size	width 130 cm and depth 293cm
Presence of cot	NO
Coat rack height from the ground	less than 140 cm and usable by people in a wheelchair



Beach

Type of beach	sand
Beach access	flat
Walkway to reach the umbrellas	YES
Type of walkway	PVC
Walkway width	90 cm





<p>Removable Platform between the walkway and the umbrella station to facilitate the passage and parking wheelchair</p>	<p>NO</p>
<p>Amphibious beach chair available for helping people with reduced mobility to enjoy swimming (owned by the establishment or by association)</p>	<p>YES</p>
	

Children's play area

<p>Children's play area</p>	<p>Inaccessible to children with reduced mobility due to the presence of steps and partly sandy bottom</p>
<p>There are games for children with reduced mobility</p>	<p>NO</p>



Swimming pool

The property has a swimming pool	NO
----------------------------------	----

Medical practices/healthcare facilities

Hospitals near the property	N.O.A. Nuovo Ospedale Apuane Marina di Massa By Enrico Mattei, 21 telephone 0585 4931
Other healthcare facilities	Emergency Medical Service By Giovan Pietro, 1 54033 CARRARA (MS) TELEPHONE; 0585 885452 Presidio distrettuale di Carrara Centro - USL Toscana nord ovest Piazza Sacco e Vanzetti, 5 - 54033 Carrara (MS) UO Nephrology ASL 1 Massa Carrara telephone 0585/498225 DIALYSIS ON HOLIDAY service

TESTED BY: **Handy Superabile Social Promotion Association in summer 2024**